

MONTHLY MEMBERSHIP PROGRESS REPORT

LOCATION ALASKA

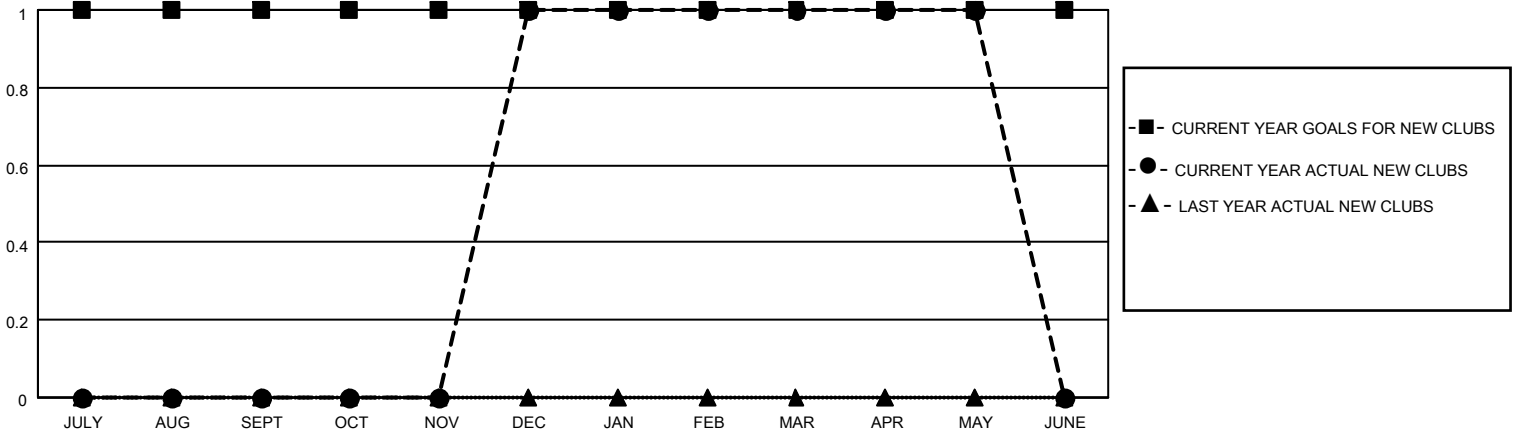
District 49 B

Results as of: 5/31/2022

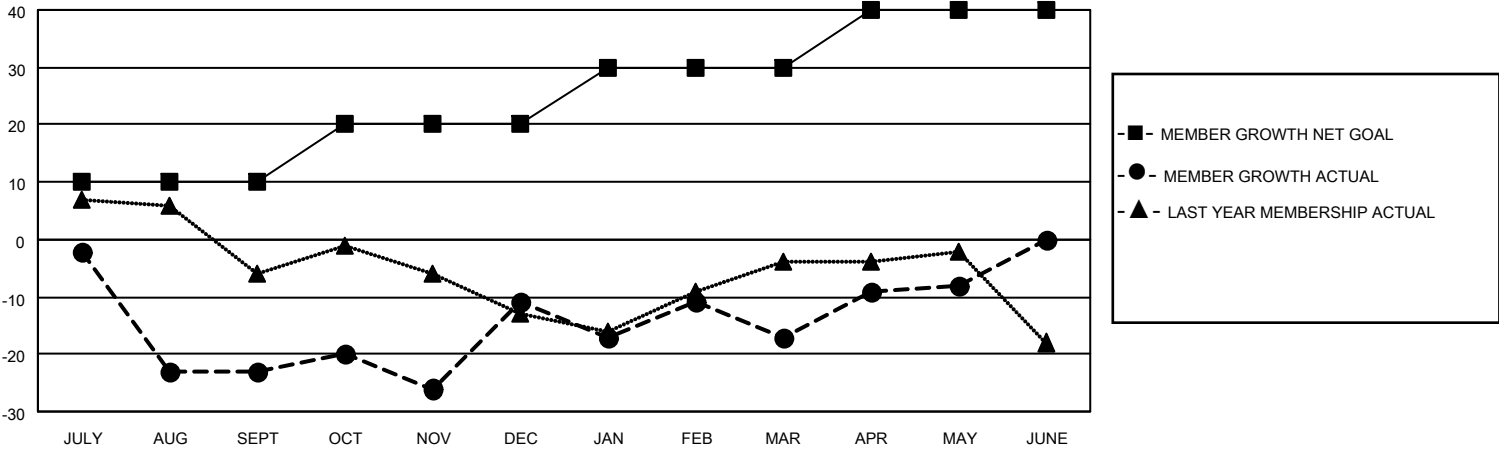
Clubs			
RESULTS FOR 2021-2022			
QUARTER	NEW CLUB GOAL	NEW CLUBS	DROPPED CLUBS
JULY/AUG/SEPT	1	0	1
OCT/NOV/DEC	0	1	0
JAN/FEB/MAR	0	0	0
APR/MAY/JUNE	0	0	0

Members			
RESULTS FOR 2021-2022			
QUARTER	MEMBER GROWTH NET GOAL	MEMBER GROWTH ACTUAL	DROPPED MEMBERS ACTUAL (including transfers)
JULY/AUG/SEPT	10	15	36
OCT/NOV/DEC	10	25	11
JAN/FEB/MAR	10	28	19
APR/MAY/JUNE	10	14	5

GOALS AND ACTUAL NEW CLUBS CUMULATIVE



GOALS AND ACTUAL MEMBERS CUMULATIVE



DROPPED CLUBS: 1

17 CLUBS OF 27 ADDED 1 OR MORE NEW MEMBERS

GENDER DISTRIBUTION

MALE	430 (58.11%)
FEMALE	310 (41.89%)
NON BINARY	0 (0.00%)
PREFER NOT TO ANSWER	0 (0.00%)

DROPPED MEMBERS

DECEASED	7
CLUB CANCELLED	28
OTHER	36
TOTAL	71

[CLICK HERE FOR CUMULATIVE MEMBERSHIP DATA](#)

TOTAL FAMILY UNIT MEMBERS	166
FAMILY MEMBERS PAYING HALF DUES	85